

Shaping the Future of
Agriculture – Together



HECHENBICHLER
A BOOST FOR SOIL · PLANTS · ANIMALS

ANIMAL CARE & FEED



SLURRY TREATMENT & STABLE HYGIENE



BIOSTIMULANTS



FERTILIZERS





Our Path into the Future of Agriculture: With Nature, for Nature

Agriculture faces significant challenges—and at the same time, opportunities unlike ever before. As a family business with more than 75 years of experience, we have always followed our own path: connected to nature, solution-oriented, and with deep respect for soil, plants, and animals. We know that future and tradition are not a contradiction; rather, they form a strong foundation when consciously combined.

Hechenbichler sees itself as a reliable partner and a pioneer for an agricultural sector that operates with resilience, efficiency, and sustainability. Our goal is to strengthen natural systems and provide the best possible support to the people who work with nature every day—offering products that perform reliably, prove themselves in the field, and simultaneously provide a clear vision for the future.

We are consistently advancing this path, particularly in the field of biostimulants. Worldwide, biostimulants are gaining importance—and for good reason. They strengthen plants and soils naturally and prepare them specifically for climatic stress factors. This is precisely why, in the further development of our portfolio, we focus on specialized solutions that offer support from the very first stage of growth and are based on proven, scientifically substantiated mechanisms of action. In doing so, we are actively shaping a future where plants can grow stronger, more vital, and more resilient.

At the same time, we remain strong in all those areas where our customers have counted on us for decades: slurry treatment, barn hygiene, animal care, and high-quality fertilizers. Products like GÜLLEMAX represent many years of practical experience, reliable effects, and a partnership-based collaboration with farming operations. Our goal remains unchanged: to offer solutions that work—day after day, season after season.

With nature, for nature, and for the people who work with nature: that is our path to success. We continue this journey consistently—with innovative strength, a sense of responsibility, and a clear vision of what the agriculture of the future can look like. Together, we are building a path that is stronger, more sustainable, and more successful.

Dr. Hanspeter Hueter
Managing Director



THE COMPANY

Editorial 02

BIOSTIMULANTS* 05

AMALGEROL ESSENCE All-around Stress Protection for Your Plants **BIO** 06

AMALGEROL STARTER CARBO With Biostimulant & Biochar 07

AMALGEROL SEED Boosting Germination and Early Growth 08

AMALGEROL SUN Protection Against Heat, Solar, and UV Radiation 09

SLURRY TREATMENT AND STABLE HYGIENE 10

GÜLLEMAX / STALLMAX From the Barn to Slurry and Solid Manure to Improved Forage **BIO** 11

GÜLLEMAX N-FIX Nitrogen Stabilization & Efficient Fertilization 16

FEINSTREU Gentle on the Animal – Better Bedding, Better Well-being **BIO** 17

ANIMAL CARE & FEED 18

AMACOOOL Soothing Pain, cooling Swelling **BIO** 19

BLACKJELLY Natural Skin Care, Promoting Healing **BIO** 20

YELLOMINT Helps with Udder Edema and Stimulates Milk Flow **BIO** 21

LACTOMAX The Energy Mix for Cows and Young Animals 22

STABISAN Prevention and Control of Calf Scours 23

FERTILIZERS 24

POWERPHOS Fast Liquid Phosphorus for Grassland & Arable Farming 25

KALIMAX Potassium Fertilizer with Thio-Sulfur 26

POWER-N Nitrogen-Sulfur Fertilizer for Slurry Enrichment 27

SULFO-N Fast and Sustained Sulfur Fertilization 28

SULFOGRANULAT / SULFOLINSEN Long-Lasting Sulfur Fertilizer **BIO** 29

MEERKALK Fast-Acting Calcium Fertilizer **BIO** 30

MEERKALK S+ Dual Action in One Pass **BIO** 31

* The term “biostimulants” used in our marketing materials describes a product category defined by Hechenbichler GmbH and does not refer to the official national or EU product registration category. The registration category may vary depending on the country. Please consult the product label or contact us or your competent local or national authorities to determine the applicable registration status.



Products marked with **BIO** comply with Regulation (EU) 2018/848, as amended, and are therefore approved for use in organic farming.



EXPERIENCE · HECHENBICHLER · QUALITY FROM AUSTRIA · DECADES OF

+75
YEARS



Future Technology with Tradition: BIOSTIMULANTS

Biostimulants represent our path into the future of agriculture—and are simultaneously the area where we drive our strongest development as a company. They support plants not by providing additional nutrients but by activating their own natural processes. This mode of action is central to an agricultural sector increasingly shaped by weather extremes, unpredictable stress factors, and rising demands for efficiency. Biostimulants improve root development, boost vitality, and increase stress resistance—even under challenging conditions such as drought, heat, cold, or fluctuating precipitation patterns.

Hechenbichler builds on decades of proven mechanisms of action and consistently develops them further. AMALGEROL is our core technology, which has proven its worth across diverse climate zones, crops, and farm structures in over 40 countries worldwide. Based on this foundation, we have developed new formulations for specific use cases—such as AMALGEROL SEED and AMALGEROL SUN—and strategically expanded our portfolio by combining biochar with AMALGEROL. Our biostimulants thus provide even more precise support during specific growth phases or stress situations.

Biostimulants do not only act on the plant itself but also in the soil—the central production factor in agriculture. They promote microbial activity, stimulate biological metabolic processes, improve soil structure, and extend water retention. Simultaneously, they increase the bioavailability of bound nutrients, thereby supporting the efficiency of traditional fertilization measures. The result is a living, active soil that provides stronger nourishment to plants and builds long-term resilience.

For us, biostimulants are the central building block for an agricultural system that operates sustainably while securing high yields. They bridge the gap between ecological responsibility and economic performance—creating solutions that work globally across different climates, crops, and stress factors.



Application

2–3 l/ha per application; do not exceed 4 l/ha. Use a sufficient amount of water to ensure thorough wetting of both soil and leaves. Crop-specific application timings can be found on the product label and our website.

AMALGEROL ESSENCE complies with Regulation (EU) 2018/848 as amended and is therefore **approved for organic farming**.

Functional Compounds

Plant-Stimulating Peptides, Bioactive Carbohydrates, Humic Acid-Like Substances, Herbal Extracts, Microbial Metabolites / Postbiotics, Organic Trace Elements, Plant Signalling Molecules

Additional information: NPK 3-0-3; 3,0 % Nitrogen (N), total, of plant origin; 3,0 % Potassium oxide (K₂O), total (water soluble); 70 % Organic substances in dry matter


Technical Specifications

pH Value: 5.5–6.5

Specific Gravity: 1.23 kg/l

Packaging Units

15 l canister; 45 x 15 l / Pallet
1,000 l IBC (Pallet tank)

 CE-Marking - PFC 6(B) according to EU Regulation 2019/1009: Non-microbial plant biostimulant / Quality trait: Increased yield in all crops

THE MULTI-COMPONENT BIOSTIMULANT

AMALGEROL ESSENCE: All-Around Stress Protection for Your Plants

- ▶ Strengthens immune system & resilience against abiotic stress
- ▶ Promotes photosynthesis, root development & nutrient uptake
- ▶ For modern agriculture: predictable yields, high quality

Why biostimulants?

Even small applications of plant-active substances trigger a positive chain reaction within the plant's immune system and the soil. This helps stabilize yields despite negative environmental influences and stress factors such as unpredictable weather events (drought, heat, late frosts, heavy rain) or side effects from crop protection activities. Biostimulants bolster plant growth and root development while nourishing the soil microbiome. This synergy counteracts soil compaction, erosion, and humus loss, as only a healthy soil enables optimal plant growth. Biostimulants play a crucial role in preparing both plants and soil for these stress situations.

AMALGEROL ESSENCE with systemic action

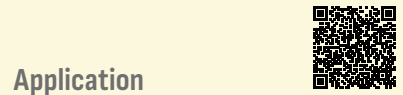
AMALGEROL ESSENCE is a plant-based, multi-component biostimulant that works systemically: on the plant, the soil and the entire ecosystem.

The effect on the leaf: Activates the plant's own immune response

- Antioxidants and signal peptides activate the neutralization of harmful molecules that are produced during stress situations.
- Bioactive carbohydrates help crops recover more quickly after hail, frost, or chemical stress.
- Priming, the induction of a plant's immune response, specifically prepares the plant for "worst-case scenarios", allowing it to react faster and with more resilience to stress.

The effect in the soil: The foundation for growth

- Humic-like substances activate soil life and mobilize locked-up micronutrients; minerals become more available through chelation.
- Signal molecules and postbiotics promote vigorous root growth, thereby enhancing nutrient and water uptake.
- Through the interaction of microorganisms and root exudates, the soil structure is improved, which increases the water-holding capacity and fertility of the soil.



Application

Row Crops: 15–20 kg/ha in the seedbed during sowing.
Ornamental Lawns/Turf: 15–20 kg/ha.

Nutrient Content

NPK (Ca, S) 11-36-0.2 (+3.5 +6.8)
 11 % Total Nitrogen (N)
 10.0 % Ammonium nitrogen
 0.9 % Urea nitrogen
 0.1 % Organic nitrogen of plant origin
 36 % Total Phosphorus Pentoxide (P₂O₅) (= 15.7% P)
 34.8 % water-soluble P₂O₅
 36.0 % neutral ammonium citrate-soluble P₂O₅
 0.2 % Total Potassium Oxide (K₂O)
 3.5 % Total Calcium Oxide (CaO)
 6.8 % Total Sulfur Trioxide (SO₃)
 1.25 % Total Zinc (Zn); 1.0% as water-soluble sulfate, 0.25% as water-soluble lignosulfonate complex
 5.8 % Organic Carbon (C_{org})
 95 % Dry Matter
 0,5 C_{org}/N
 –

With 5% AMALGEROL ESSENCE

Technical Specifications

Granule Size: 0.5–1.5 mm

Packaging Units

20 kg bag; 40 x 20 kg / Pallet
 Minimum order quantity: 1 Pallet



WARNING
Hazard Statements
 H319 Causes serious eye irritation.
 H411 Toxic to aquatic life with long-lasting effects.



STARTER FERTILIZER FOR EARLY DEVELOPMENT

AMALGEROL STARTER CARBO: With Biostimulant & Biochar

- ▶ Ensures optimal early development
- ▶ Application with sowing in a single pass
- ▶ Contains 5 % Biostimulant AMALGEROL ESSENCE and 5 % Biochar

Why use a starter fertilizer?

While a young plant initially draws from the reserves stored in the seed, a strong, well-developed root system determines vitality and yield in the subsequent growth phases. Optimal nutrient supply is critical during this sensitive starting phase. Especially in wet and cold spring conditions, the availability of key nutrients in the soil – most notably phosphorus – is often restricted.

A sufficient supply of nitrogen (N) and phosphorus (P) supports rapid root development while promoting the colonization of beneficial microorganisms in the rhizosphere. This increases the stress resistance of the young plants and sustainably improves the nutrient dynamics in the soil. The biochar contained in the product reinforces these effects beyond the early growth phase and contributes to long-term soil and plant health.

By applying the fertilizer in microgranule form directly during sowing, the nutrients reach exactly where they are needed: the seed row. This makes them immediately available to the seedling – ensuring a fast, uniform, and healthy

start.

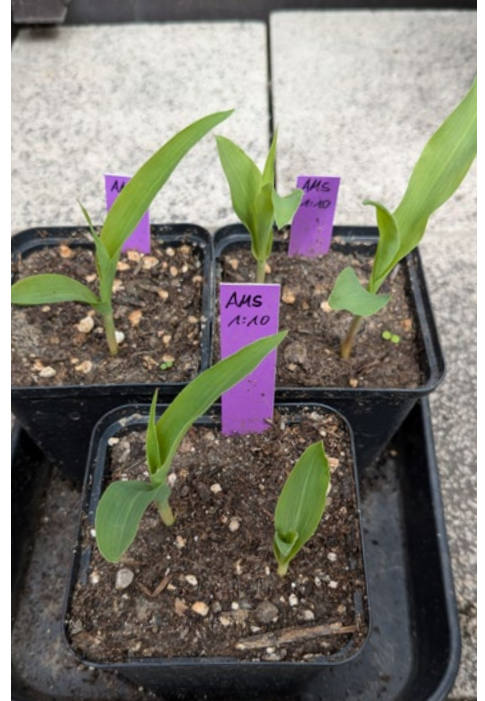
Growth Advantage with AMALGEROL STARTER CARBO

- Supplies the seedling with sufficient quantities of the essential nutrients nitrogen, phosphorus, and zinc.
- Suitable for all sown crops such as maize, pumpkin, soy, sugar beet, sunflower, cereals, and field vegetables, as well as turf/lawns.
- Contains the biostimulant AMALGEROL ESSENCE and Biochar, which together have a positive influence on plant and soil health.

AMALGEROL ESSENCE and Biochar promote root formation, activate soil life, and optimize nutrient and water availability. Together, they **strengthen the immune system of the young plant**. Furthermore, biochar serves as a long-term carbon sink in the soil.

AMALGEROL SEED

AMALGEROL SEED promotes plant development and ensures seedling uniformity.
 Photo: Maize plants germinated in untreated soil (left); compared with germination using AMALGEROL SEED (right).



Application

Use before sowing/planting for seed dressing and tuber treatment. Apply up to 48 hours before sowing/planting.

Seed treatment (cereals, rice, etc.):

1.5–3 l/t, working solution 6–10 l/t.

Tuber treatment (potato):

0.3–0.7 l/t, working solution 20 l/t.

Nutrient Content

NK 3–3

3.0 % Total Nitrogen (N)

2.7 % Organic nitrogen (N_{org}) of plant origin

0.3 % Ammonium nitrogen (NH₄)

3.0 % Total Potassium Oxide (K₂O)

20 % Organic Carbon (C_{org})

47 % Dry Matter

C_{org}/N = 6,7

–

Contains 0.6 % Total Phosphorus Pentoxide (P₂O₅)

Technical Specifications

pH Value: 5.5–6.5

Specific Gravity: 1.23 kg/l

Packaging Units

10 l canister; 60 x 10 l / Pallet

BOOSTING EARLY DEVELOPMENT

AMALGEROL SEED: Boosting Germination and Early Growth

- ▶ Promotes germination, early growth, and vigorous root development
- ▶ Improves tolerance to abiotic stress
- ▶ Enhances crop quality and yield

Powerful Start and Homogeneous Field Emergence

AMALGEROL SEED awakens the hidden potential of your seeds. Through the targeted activation of metabolic processes, plants germinate more vigorously and more uniformly. The result is a vital stand that establishes itself well even under difficult conditions - such as cold or drought.

Stronger Seedlings – Enhanced Root Development

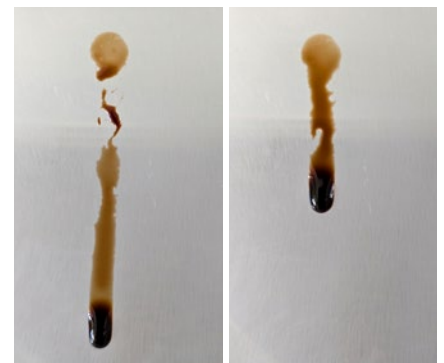
Treated seeds immediately develop stronger roots and shoots. This improves nutrient and water uptake and anchors the plant securely in the soil. Thanks to the early activation of protective reactions, seedling survival rates increase significantly, even under nutrient stress or drought.

Improved Microbial Interaction

AMALGEROL SEED works in two ways: it strengthens the seedling and simultaneously creates

an ideal environment for beneficial endophytes and microorganisms in the root zone. These "helpers" solubilize nutrients and produce growth-promoting hormones. Furthermore, the product can be perfectly combined with microbial seed dressings to promote the establishment of microbial biostimulants.

Improve your crop performance from the ground up. Seed priming is a cost-effective method that gives the seed the metabolic boost it needs for fast, strong, and resilient growth - even under stress.



AMALGEROL SEED adheres very well to smooth surfaces and exhibits excellent wetting properties. This is crucial for an efficient seed-priming process.
 Photo: AMALGEROL ESSENCE (left) and AMALGEROL SEED (right) product droplets on a hydrophobic surface.



With AMALGEROL SUN, the overall ripening behavior of apples was improved (lower field), resulting in a harvest of more uniformly colored apples and better consumer perception.

SUN PROTECTION WITH AN INVISIBLE SHIELD

AMALGEROL SUN: Protection Against Heat, Solar, and UV Radiation

- ▶ Activates cellular protection by increasing antioxidant production
- ▶ Increases the plant's pigment content to protect against UV damage
- ▶ Modulates CO₂-uptake and water loss via stomatal function

Ensuring marketable quality even under extreme conditions

Increasing UV exposure and extreme temperatures present new challenges for agricultural systems. AMALGEROL SUN reliably protects your crops from light- and heat-induced damage. The product reduces oxidative damage and necrosis by up to 70% - completely without a visible particle film. With AMALGEROL SUN, fruits develop uniformly, and even under difficult weather conditions, yields remain stable and the proportion of marketable fruit remains high.

Optimal color development and sweet fruit

AMALGEROL SUN activates the production of natural protective pigments within the plant. This allows harmful radiation to be absorbed before it can damage the cells. The advantage: excess light energy is converted directly into the plant's own energy (sugars, Brix). This energy reserve leads to more uniform ripening and more intense fruit coloration.

Maximizing stress resistance

AMALGEROL SUN activates the plant's own immune system. It assists in neutralizing cell-damaging free radicals (ROS, Reactive Oxygen Species) and promotes the formation of protective molecules to prevent growth stops during periods of high heat. Additionally, it regulates the function of the stomata (pores) to minimize water loss while ensuring a steady supply. The result is resilient plants that remain vital even under intense solar radiation.



Sunburn leads to browning and necrosis of the berries and the fruit set, which ultimately impairs the overall quality of the grapes. With AMALGEROL SUN, necrotic damage can be reduced by up to 70% compared to untreated grapes.



Application

2–4 l/ha per application. Use a sufficient amount of water to ensure thorough wetting of the leaves.

Repeated curative application before and during the heat period.

Crop-specific application recommendations can be found on the product label and our website.

Nutrient Content

NK [Ca-Mg-S] 2.3-2 [7.5-0.1-1]

2.3 % Total Nitrogen (N)
 2.1 % Organic nitrogen (N_{org}) of plant origin
 0.2 % Ammonium nitrogen (NH₄)
 2.0 % Total Potassium Oxide (K₂O)
 7.5 % Total Calcium Oxide (CaO)
 0.1 % Water-soluble Magnesium Oxide (MgO)
 1.0 % Water-soluble Sulfur Trioxide (SO₃)
 15 % Organic Carbon (C_{org})
 49 % Dry Matter
 C_{org}/N = 6.5
 –
 Contains 0.3 % Total Phosphorus Pentoxide (P₂O₅)

Technical Specifications

pH Value: 6–7

Specific Gravity: 1.31 kg/l

Packaging Units

10 l canister; 60 x 10 l / Pallet



SLURRY TREATMENT AND STABLE HYGIENE

Modern livestock management requires solutions that work reliably while simultaneously supporting natural processes. Our products for slurry treatment and stable hygiene are designed to facilitate daily workflows in the barn and specifically improve the quality of the slurry—and thus its effectiveness in the field. They increase flowability, reduce odors, promote biological degradation processes, and contribute to a more hygienic barn environment—a decisive factor for animal health and efficient farm management.

For many years, GÜLLEMAX has been one of the products that farmers consistently trust. The proven formula supports the homogenization of the slurry, prevents hard deposits, dissolves floating crusts and sediment layers, and significantly simplifies both stirring and application. At the same time, it creates a more stable biological environment in the slurry storage facility, allowing natural degradation processes to proceed more effectively.

These positive effects continue in the field: the improved slurry quality increases the soil's responsiveness. The organic fraction is converted more quickly, the crumb structure stabilizes, soil compaction is reduced, and soil biology is given more room to thrive. This improves water absorption and retention, leading to more resilient, fertile soils in the long term.

The result is a consistent benefit along the entire value chain: cleaner conditions in the barn, more efficient logistics in slurry storage, a smoother workflow during application, and a sustainable improvement in soil health. Natural support provides noticeable relief for modern farms in their daily work—and helps maintain the balance of soils and natural cycles in the long term.

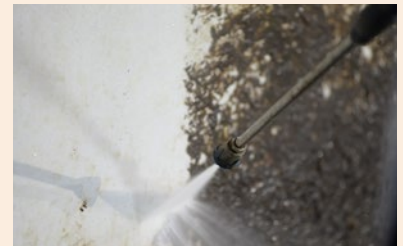


"Cleaning the barn with GÜLLEMAX is significantly easier, faster, and more economical than before."

Josef Misslinger



"Using the dosing device, we apply GÜLLEMAX as a 5% solution to the dry walls."



"We then spray off the softened manure crusts with a high-pressure cleaner from a distance of 20–30 cm."



"Since we switched to a free-stall barn, GÜLLEMAX has been the easiest method for barn cleaning."



Josef Misslinger, Wiflberghof; Hopfgarten in Tyrol Dairy farm with young stock and its own cheese dairy; free-stall barn with 130 LU of Simmental cattle.

USER REPORT

Barn Cleaning and Slurry Management "In a Fraction of the Time"

Josef Misslinger relies on GÜLLEMAX for barn cleaning on his dairy farm to increase efficiency and significantly reduce the workload.

The Operation

Josef Misslinger and his family manage a dairy farm with 130 LU (livestock units) of Simmental cattle. The average annual milk yield per cow in the herd is 9,000 kg.

In the summer, when the cows are on the high alpine pasture and the barn is empty, Josef Misslinger performs a thorough barn cleaning.

The Measures

- Spray manure crusts dripping wet with a 5% GÜLLEMAX solution
- Allow to soak for 30 minutes and spray off with cold water
- Apply a 5% GÜLLEMAX solution as a protective film on the floor and walls

The Result

"Cleaning the barn with GÜLLEMAX is much easier, faster, and more economical than before," summarizes Josef Misslinger.

"The smell in the barn is good, and there are significantly fewer flies. After the second application with GÜLLEMAX, the protective film ensures that the manure binds less to the floor and walls, making subsequent cleaning much easier."



ANIMAL HEALTH AND SLURRY QUALITY

GÜLLEMAX / STALLMAX: From the Barn to Slurry and Solid Manure to Improved Forage

CHALLENGES IN LIVESTOCK FARMING: BARN HYGIENE AND SLURRY ENRICHMENT

Modern livestock farming thrives on stable hygiene and the responsible management of organic fertilizers. Clean, well-ventilated barns form the basis for healthy animals, high performance, and sustainable production. At the same time, professional nutrient management offers the opportunity to make optimal use of valuable resources and reduce environmental impact. GÜLLEMAX is the perfect addition to your stable hygiene; it efficiently supports cleaning processes, improves the stable climate, specifically assists storage technology, and promotes efficient organic fertilizer utilization in grassland. In this way, a necessity becomes a future opportunity—for animal welfare, the environment, and profitability alike.

Cleaning the Barn and Milking Parlor

Encrustations of manure and feed residues are often difficult to remove. Fats, proteins, carbohydrates—all these are components of these crusts on walls, floors, and even hooves; once dried, their removal takes a lot of time and cleaning agents. The special composition of GÜLLEMAX accelerates the detachment of these encrustations. After a short soaking time, everything can be removed in no time with a high-pressure cleaner. GÜLLEMAX helps you save! You need less detergent, and the shorter washing time reduces your water consumption.

Improved Barn Hygiene – Fewer Flies

Regular application of GÜLLEMAX reduces the formation of encrustations on the floors and kickstarts the natural transformation of the slurry. The slurry flows away more easily, and due to the altered slurry biology, fewer fly larvae find a basis for survival. The result: less odor and fewer flies. This promotes the health and well-being of the animals while simultaneously increasing performance.

Better Barn Climate – More Productive Animals

Ammonia, methane, and hydrogen sulfide are health-damaging gases from the slurry that also pollute the climate. Poor barn air impairs the health of both animals and humans, leading to an increased risk of infection and reduced feed conversion. GÜLLEMAX reduces the formation of foul odors caused by the multiplication of the "wrong" microorganisms in the slurry. Thanks to GÜLLEMAX and its health-promoting essential oils, the barn air improves noticeably! As a result, animals are under less stress; they are healthier and calmer, and both feed intake and feed conversion are increased.

SLURRY TREATMENT

No two slurries are the same. Summer or winter—feed composition and animal species, bedding, and feed additives lead to variation in slurry quality. The water content also plays a major role. GÜLLEMAX promotes the microorganisms that are so important for the efficient processing of the slurry. This converts nutrients into plant-friendly forms and reduces unpleasant odors. Bacteria that produce putrid odors stand no chance in this environment.

Helps Reduce Floating Crusts – Increases Flowability

Slurry contains a lot of organic matter and nutrients that serve as food for microorganisms. GÜLLEMAX promotes microbial activity, causing sticky substances such as proteins or fats to be broken down and converted. The slurry becomes homogeneous and more flowable, making it easier to pump and apply—channel blockages and floating crusts are reduced. Through microbial growth, nitrogen and sulfur are also bound in organic matter and only released in plant-available form once in the field. This prevents them from escaping into the air or leaching into the groundwater. Because of this special processing, they do not overwhelm the plants or the soil but ensure a sustainable fertilizing effect over a longer period.

Please note: residues of cleaning agents and antibiotics in the slurry inhibit this microbial growth—the microbiological system is disrupted.

Naturally transformed slurry does not stink, does not stick, is less slimy, and flows better.



SOLID MANURE TREATMENT

Modern technologies such as slurry separation offer a perfect field of application for GÜLLEMAX. Well-rotted solid manure is the ideal fertilizer for agricultural land. GÜLLEMAX accelerates the conversion and maturation of the organic matter and the decomposition of bedding material such as straw. The accelerated conversion reduces the volume to be stored, and the matured manure can be applied earlier. Through the targeted activation of special microorganisms present in the manure, the organic components are better processed—suitable for the sustainable supply of plants and soil life—while harmful organisms and pathogens are suppressed. Applying GÜLLEMAX as early as the barn stage facilitates mucking out due to its ingredients that reduce sticking. Once in storage, it takes effect immediately and boosts microbial nutrient fixation. GÜLLEMAX already has a positive influence on the microbiological environment in the barn, which positively impacts the well-being and vitality of the livestock.

IMPROVED FORAGE QUALITY

- GÜLLEMAX as a component of well-processed slurry or solid manure:
- Maximizes the nitrogen and sulfur fertilizing effect.
- Improves plant compatibility, thus preventing scorching or chemical burns on the sward.
- Increases the fertilizing effect and ensures a balanced plant supply over a longer period.
- Promotes the formation of a dense sward (larger clumps, denser roots), leaving less space for weeds and allowing for faster regeneration after mechanical stress (trampling damage, cutting).
- Increases the feed value through higher dry matter and better nutrient content.
- GÜLLEMAX promotes the utilization of valuable nutrients, encourages the growth of desirable forage grasses and clover with high feed value, and reduces weed infestation.



GÜLLEMAX: Application

APPLICATION IN THE BARN

0.1 l GÜLLEMAX per LU (Livestock Unit) per week

For ongoing application in the barn. Depending on the farm workflow, the GÜLLEMAX dose can be divided into several applications per week. Mix GÜLLEMAX at least 1:20 with water (5% GÜLLEMAX solution) and ensure even distribution.

Application in the Cattle Barn

Slatted floors: Pour through the slats into the channels.

Scraper manure removal: Pour at the starting point and let the scraper distribute it over the entire surface.

Tie-stall barn: Pour over the manure gutter before mucking out.

Application in the Pig Barn

Piglets, farrowing barn: After washing (before restocking), apply 0.2 l GÜLLEMAX per m³ of slurry (that will be in the channel at the time of discharge) through the slats into the slurry channel.

Finishing pigs: We recommend 0.25 l GÜLLEMAX per pig per finishing period. Apply 50% of this at the beginning of a cycle into the empty channels; apply the remaining 50% halfway through the finishing period through the slats into the slurry channel.

Gestation barn and breeding center: Every 4 weeks, apply 0.4 l GÜLLEMAX per LU through the slats into the slurry channel.

SLURRY TREATMENT

0.2 l GÜLLEMAX per m³ slurry

For dissolving channel blockages and floating crusts, and for treating slurry pits.

Dissolving Channel Blockages

To achieve faster dissolution of channel blockages, pierce floating crusts wherever possible with the lance of a high-pressure cleaner and inject the 5% GÜLLEMAX solution directly.

Breaking Up and Dissolving Floating Crusts and Sediment Layers

To dissolve floating crusts or sediment layers in the slurry tank, add the 5% GÜLLEMAX solution directly into the pit. If possible, break up the floating crusts or sediment layers in a few places so that the GÜLLEMAX solution can unfold its effect intensively. Add the GÜLLEMAX solution and, if possible, mix the slurry tank. This helps distribute the GÜLLEMAX solution and accelerates the effect. After approx. 30 days, the floating crusts or sediment layers will be dissolved.

Treating Slurry Tanks

Dilute at least 1:20 with water (results in a 5% GÜLLEMAX solution).



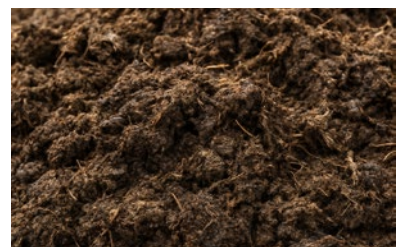
Reduzierter Geruch und weniger Fliegen sorgen für gesteigerte Tiergesundheit und Wohlbefinden.



GÜLLEMAX macht die Gülle homogen und fließfähig – für leichteres Pumpen und eine gleichmäßige Ausbringung.



GÜLLEMAX fördert den mikrobiellen Abbau – Schwimmschichten lösen sich auf, Verstopfungen werden reduziert.



GÜLLEMAX verbessert die Rotte im Festmist – für eine lockere Struktur, weniger Geruch und optimal verfügbare Nährstoffe.



THE CORRECT, ECONOMICAL DOSAGE

0.1 l GÜLLEMAX / STALLMAX per Livestock Unit (LU) per week is the recommended and maximum required application rate for regular continuous use.

SOLID MANURE TREATMENT

0.3 l GÜLLEMAX per m³ solid manure

Manure treated with GÜLLEMAX is less sticky and has significantly less volume. Mucking out is made easier, and manure rotting is accelerated.

Treatment of Calf Pens and Straw-bedded Barns

Recommended application steps:

Mucking out.

Barn cleaning with 5% GÜLLEMAX solution.

Distribute fresh straw or bedding. Distribute GÜLLEMAX (0.1 l per LU per week) evenly. We recommend dividing this dose into several applications per week.

Time-saving Mucking Out in the Poultry House

Barn hygiene for broilers, turkeys, pullets, and laying hens can be improved by applying a 5% GÜLLEMAX solution.

Broilers and turkeys: 1.5 l GÜLLEMAX per 100 m² of barn floor space.

Pullets and laying hens: 2 l GÜLLEMAX per 100 m² of barn floor space (including housing systems).

Recommended application steps:

- Mucking out.
- Spray dry floor, walls, ceiling, and housing systems with 5% GÜLLEMAX solution and let it take effect for 20–30 minutes.

- Wash and disinfect, allowing each to dry well.
- Spray dry floor, walls, ceiling, and housing systems again with GÜLLEMAX solution and let dry.
- Spread bedding and house the chicks or hens.

BARN CLEANING

5% GÜLLEMAX solution

For washing the barn and milking parlor. Ensure even distribution. 1 liter of GÜLLEMAX to 20 liters of water is sufficient for approx. 100 m² of barn area.

Washing the Barn and Milking Parlor

- Spray dry dirty surfaces and manure encrustations with 5% GÜLLEMAX solution.
- Let it take effect for 20–30 minutes (up to 45 min. for heavier soiling) so that GÜLLEMAX can loosen the dirty and encrusted areas.
- Spray off dirt with a high-pressure cleaner and clear water from a short distance (10–30 cm).
- Spray clean surfaces again with 5% GÜLLEMAX solution. New dirt will no longer stick as firmly.



Functional Ingredients

GÜLLEMAX: Water-soluble emulsion concentrate with hydrocarbons, TEA-oleate, plant oils, essential oils.

STALLMAX: Aqueous emulsion concentrate with plant oils, plant fatty acids, essential oils, and shale oil (Sodium Shale Oil Sulfonate).

STALLMAX complies with Regulation (EU) 2018/848 and is therefore **approved for organic farming**.

Technical Specifications

pH value: 8.5–9.5

Packaging Units

10 l canister; 84 x 10 l / Pallet

25 l canister; 36 x 25 l / Pallet

200 l drum; 2 x 200 l / Pallet



GÜLLEMAX WARNING

H336 May cause drowsiness or dizziness.
H412 Harmful to aquatic life with long-lasting effects.
EUH066 Repeated exposure may cause skin dryness or cracking.

STALLMAX HAZARD STATEMENTS

H412 Harmful to aquatic life with long-lasting effects.



Application

GÜLLEMAX N-FIX can be mixed in undiluted during the loading of the slurry tanker using a bypass or suction intake.

Recommended Application Rates:

Grassland: 4–5 l/ha for the 1st and optionally the 2nd fertilization.

Arable crops (Cereals, maize, oilseed rape, sugar beet, potatoes): 5–6 l/ha.

Content

5.3 % 3,4-Dimethylpyrazole phosphate (DMPP)

Technical Specifications

pH Value: 3

Specific Gravity: 1.05 kg/l

Packaging Units

20 l canister; 24 x 20 l / Pallet



WARNING

Hazard Statements

H302 Harmful if swallowed.

H317 May cause an allergic skin reaction.

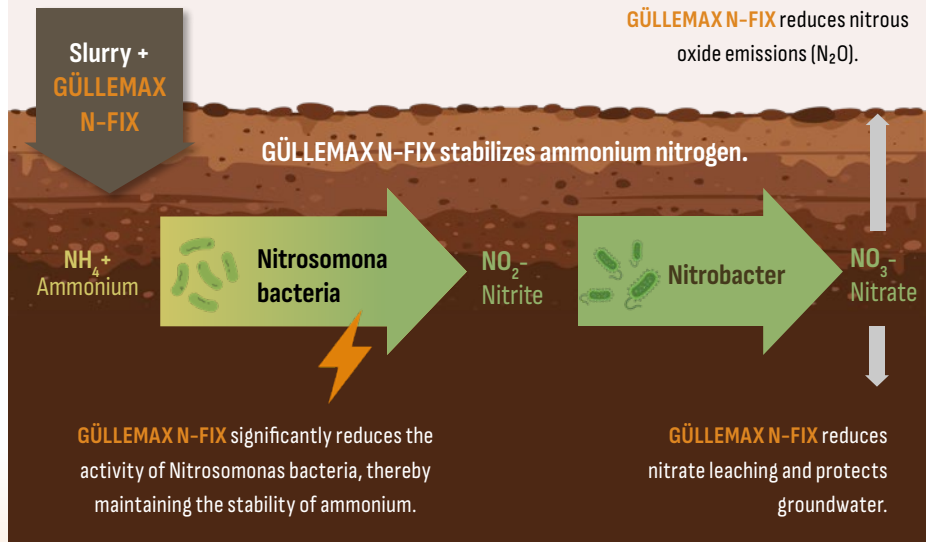
H361fd Suspected of damaging fertility.

Suspected of damaging the unborn child.

H373 May cause damage to kidneys

through prolonged or repeated exposure.

Route of exposure: Ingestion.



ENVIRONMENTALLY FRIENDLY MAXIMIZATION OF FERTILIZER EFFICIENCY

GÜLLEMAX N-FIX: Nitrogen Stabilization & Efficient Fertilization

- ▶ Stabilize ammonium nitrogen
- ▶ Optimize plant availability
- ▶ Protect the environment

Stabilize nitrogen – Maximize fertilizer effect

With our DMPP-based nitrification inhibitor, you can effectively stabilize the nitrogen in your slurry. GÜLLEMAX N-FIX slows down the activity of soil bacteria (Nitrosomonas bacteria) and thus delays the conversion of ammonium into nitrite and subsequently nitrate. Depending on soil temperature and soil type, the applied ammonium nitrogen remains stable and available to the plant for up to 14 weeks. The result is consistently vigorous plant growth and improved harvest quality.

Simple, time-saving, and ideal in combination

GÜLLEMAX N-FIX can be easily mixed directly into the slurry tanker via a bypass. To further increase the fertilizing effect and ensure the long-term nitrogen availability for your crops, combine GÜLLEMAX N-FIX with our powerful liquid nitrogen fertilizer, POWER-N. Especially

when the slurry has a low nitrogen content, POWER-N (27 % N, 3 % S) offers an optimal upgrade. This combination improves nutrient supply and reduces the need for additional fertilizer applications.

Protects the environment and boosts nitrogen use efficiency

The use of GÜLLEMAX N-FIX contributes significantly to environmental protection. By effectively slowing the conversion of ammonium to nitrite, you reduce nitrate leaching into the groundwater as well as the emission of nitrous oxide into the atmosphere. By stabilizing the ammonium nitrogen with GÜLLEMAX N-FIX, a larger portion of the applied nitrogen is actually absorbed and utilized by the plants. This is reflected in their healthy and robust growth.



THE PERFECT BEDDING

FEINSTREU: Gentle on the Animal – Better Bedding, Better Well-Being

- ▶ With Toxin Binder & Essential Oils
- ▶ Intensive Drying and Conditioning
- ▶ Promotes Animal Welfare

FEINSTREU – Gentle on the Animal

FEINSTREU binds enormous amounts of moisture and harmful substances, keeping lying areas dry. It comes with highly desirable "side effects": thanks to its powder-like consistency, a specialized toxin binder, and selected essential oils, FEINSTREU provides effective yet gentle hygiene for both udders and hooves.

With Specialized Toxin Binder

The toxin binder added to FEINSTREU features a scaffold-like structure with microscopic cavities and channels. These capture and permanently bind hazardous substances. The pollutant-binding capacity is immense. FEINSTREU adheres like powder between the hooves (claws). The selected essential oils soothe and condition the hooves as well as skin areas that otherwise come into direct contact with manure (assisting in Digital Dermatitis/Mortellaro prevention).

Calf Pens: Dry & Healthy

FEINSTREU dries out damp calf pens and creates a hygienic foundation for the healthy development of your calves.



Application

Bedding lime for the lying and walking areas of livestock.

Requirement: 1–2 kg per LU (Livestock Unit) per week. Also suitable for creating a lime-straw mattress. Further application recommendations can be found on the product label and our website.

FEINSTREU complies with Regulation (EU) 2018/848 and is therefore **approved for organic farming**.

Bedding Material for Animals

Fine lime from natural deposits in Austria, enriched with essential oils and a toxin binder.

Technical Specifications

pH Value: > 9

Degree of Fineness: 91 % under 45 µm, 50 % under 12 µm

Packaging Units

25 kg bag; 42 x 25 kg / Pallet
1,000 kg Big Bag



ANIMAL CARE & FEED

Healthy animals are the foundation of any successful farming operation. Our animal care and feed products support natural regeneration processes in cattle, calves, pigs, sheep, goats, and horses—and play a decisive role in ensuring smooth operations in animal husbandry. Whether in the barn, on the pasture, or in daily handling: the stability, well-being, and resilience of the animals are central factors for the success of any enterprise.

Our solutions combine time-tested ingredients with practice-oriented formulations that have proven themselves over many years in a wide variety of farms, stables, and housing systems. They help to reduce stress, support skin and hoof health, promote regeneration, and specifically strengthen animals during challenging phases. In addition, our feed products offer high-quality support for energy metabolism, digestion, and general vitality.

Our expertise is based on a deep understanding of the needs of both sides: the people who work with their animals every day—farmers, livestock owners, horse breeders, and horse enthusiasts—and the animals themselves, who give clear signals when something is working or not. We know what matters in practice and develop products that tackle the right areas: effective, safe, easy to use, and tailored to the real-world requirements of handling animals.

Our goal is clear: reliable support that promotes animal health, stabilizes operational processes, and eases the daily workload—natural, effective, and practical.



AMACOOOL cools and supports regeneration – naturally and effectively.

COOLING EFFECT

AMACOOOL: Soothing Pain, Cooling Swelling

- ▶ Rapid, effective cooling
- ▶ Effective relief for inflammation
- ▶ Regeneration of stressed joints

How does AMACOOOL work?

AMACOOOL cools and regenerates. That is precisely why it should not be missing from any stable's first aid kit. Through the evaporation of moisture, heat is dissipated from the body. The herbal extracts, produced according to an old Swiss recipe, support the body's regeneration process through a balanced blend of various essential and natural oils.

Rapid and effective cooling for udder inflammation

When applied to the udder, AMACOOOL supports the healing process of udder inflammation (mastitis) and serves as an effective supple-

ment to veterinary treatment. AMACOOOL assists in the drying off of dairy cows and reduces the risk of udder swelling during the dry period. After calving, it supports the regeneration of reddish ("fluid") udders—particularly in heifers. Additionally, heat in the udder can be effectively treated with AMACOOOL.

AMACOOOL has no influence on milk flavor – there are no withdrawal periods!

Relieves joint swelling

AMACOOOL combats swelling and cools stressed joints, tendons, and muscles; it supports regeneration during joint, tendon, and muscle complaints and ensures rapid well-being.



Application

To support the healing process of mastitis: Apply a thick layer to the udder 2–3 times daily over a period of one week. Cools pleasantly and quickly. AMACOOOL has no influence on milk flavor. No withdrawal period!

Drying off dairy cows: Simply apply a thick layer of AMACOOOL to the udder after the final milking.

Cooling of swellings and leg regeneration: Apply a thick layer 2 times daily. Do not apply to open wounds or mucous membranes!

AMACOOOL complies with Regulation (EU) 2018/848 as amended and is therefore **approved for organic farming**.

Animal Care Product

For external use. Contains alumina (clay), acetic acid, apple cider vinegar, vegetable oils, and essential oils.

Packaging Units

2.5 kg tub; 6 x 2.5 kg / box
12.5 kg bucket

Labeling

EUH210 Safety data sheet available on request.
EUH208 Contains benzyl alcohol. May produce an allergic reaction.

BLACKJELLY



Application

After mastitis: Apply thinly to the udder twice daily for a period of one week and massage in.

For skin care: Clean the skin areas thoroughly, then apply thinly and massage in. Excellent for the inner thighs of dairy cows and the navel area of young animals.

BLACKJELLY complies with Regulation (EU) 2018/848 as amended and is therefore **approved for organic farming**.

Animal Care Product

For external use. Contains plant-based and essential oils, as well as shale oil.

Packaging Units

1.5 kg dispensing pump; 8 x 1.5 kg / box
10 kg bucket

Labeling

EUH210 Safety data sheet available on request.
EUH208 Contains (R)-p-mentha-1,8-diene, cineole, benzyl alcohol. May produce an allergic reaction.



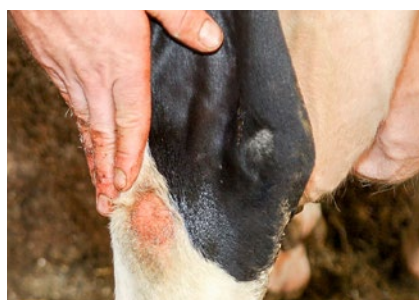
SHALE OIL

BLACKJELLY: Natural Skin Care, Promoting Healing

- ▶ Softens hardened quarters again
- ▶ Promotes healing after mastitis
- ▶ Natural skin care

How does BLACKJELLY work?

BLACKJELLY works by simultaneously warming the tissue to promote circulation and "drawing" hardness out of the affected quarter. Essential and plant-based oils have been used as traditional home remedies for millennia and have proven their efficacy. This knowledge of warming, circulation-enhancing, and "drawing" herbal extracts, passed down through generations, naturally increases the well-being of your animals. The herbal extracts, produced according to a traditional Swiss recipe, support the body's regeneration process through a balanced blend of various essential and other natural oils.



Promoting healing after udder and mammary inflammation

When applied to the udder, BLACKJELLY supports veterinary treatment and promotes natural healing, especially in the case of hardened (indurated) quarters. BLACKJELLY can also support healing for eczema that occurs on the inner thigh or udder attachment of high-yielding cows.

BLACKJELLY has no influence on milk flavor—there is zero withdrawal period!

Natural skin care

BLACKJELLY can also be successfully used on open skin areas. It softens cracks, fissures, scaly patches, and hardened tissue, making the skin supple again. BLACKJELLY is absorbed immediately and relieves itching. Therefore, it is ideally suited for the care of the navel area in young animals, where it also helps to deter flies



HELPS – ACTS – REGENERATES

YELLOMINT: Helps with Udder Edema and Stimulates Milk Flow

- ▷ Helps with udder edema
- ▷ Softens the udder
- ▷ Stimulates milk flow

How does YELLOMINT work?

YELLOMINT, containing natural herbs and essential oils, provides fast and effective relief for udder edema. It promotes blood circulation, stimulates milk flow, and strengthens the local immune defense in the udder and teat area. The udder quickly becomes soft again, allowing for a better milk-out. The cream has a refreshing, decongestant, and soothing effect. Specially selected essential oils support the immune system and increase the cow's well-being. YELLOMINT contains a balanced blend of nourishing oils, most notably lanolin. Lanolin effectively binds moisture in the skin and is lipid-replenishing. It strengthens the skin's own protective barrier and makes the skin supple, soft, and resilient. 100% natural means zero withdrawal period.

Apply 3 days before and 3 days after calving

With the onset of milk production, blood flow to the udder tissue must increase, which naturally leads to the formation of udder edema. However, these fluid retentions in the udder tissue have far-reaching consequences. Udder edema impairs the defense function of the teat, allowing environmental pathogens to penetrate more easily and provoke mastitis. Due to the swelling of the udder, milking is made more difficult, and the milk remaining in the udder increases the risk of mastitis. The enlarged, edematous udder exerts pressure on the udder-thigh fold and increases friction between the udder and the leg, which can further develop into udder-thigh dermatitis (groin eczema). At the time of birth, the cow has her entire lactation period ahead of her. Help her master this transition in the best possible way. This is the only way your cow will reach her potential as quickly as possible and deliver high-quality milk.



Application

Apply YELLOMINT thinly to the udder and massage the cream in. We recommend using YELLOMINT twice daily for 3 days before and 3 days after calving. Use longer if necessary. Apply the cream only externally to the udder and not on the teats. If used more than twice daily, apply a conditioning cream between applications.

YELLOMINT complies with Regulation (EU) 2018/848 and is therefore **approved for organic farming**.

Animal Care Product

For external use. Contains plant-based and essential oils.

Packaging Units

500 g bottle; 20 x 500 g 1.5 kg dispensing pump; 8 x 1.5 kg / box



WARNING Hazard Statements

H315 Causes skin irritation.
 H319 Causes serious eye irritation.
 EUH208 Contains trans-menthone, p-menth-1-en-4-ol, isomenthone, p-mentha-1,3-diene, benzyl alcohol. May produce an allergic reaction.



Application

Dairy cows:

300–500 g daily per cow, from 2 weeks before until 6–8 weeks after calving.

Rearing cattle:

100–300 g daily per head.

Calves:

10 g per liter of milk replacer (MR).

Sheep, goats (dams/ewes):

50 g daily per animal.

Breeding sows, piglets, finishing pigs:

10–25 kg per metric ton of feed.

Ingredients

65 % Isomaltulose molasses

34.8 % Water

0.2 % Potassium sorbate

Analysis: 0.5 % Crude ash; 15.8 MJ ME (Cattle); 10.0 MJ NEL (Cattle); 14.5 MJ ME (Pig)

Packaging Units

10 kg canister (liquid)

2 x 10 kg / box

4 x 10 kg / box

1,100 kg IBC (Pallet tank) (liquid)



THE ENERGY SOURCE

LACTOMAX: The Energy Mix for Cows and Young Animals

- ▶ Strengthens quickly and sustainably
- ▶ Promotes appetite and feed intake
- ▶ Highest digestibility

Acute energy deficiency leads to declining milk yields and uneven growth in young animals. This energy deficit occurs most frequently after birth (calving) and can escalate into clinical ketosis.

Immediate Effect and Sustained Energy Supply

LACTOMAX is a balanced blend of highly digestible sugars that are broken down in different digestive regions and at varying speeds:

- Two fast-acting sugars get the cow back on her feet quickly.
- Four slow-digesting sugars ensure a steady and consistent release of energy into the bloodstream.

The LACTOMAX power mix simultaneously stimulates the appetite, resulting in consistent and overall higher dry matter intake (DMI). This ensures the animal receives all necessary nutrients through its regular feed. Milk yield and protein content are improved. In young animals, LACTOMAX ensures steady, robust development.

The Advantages

- Sweet taste
- Rapidly supports beneficial gut bacteria.
- Alcohol-free - Gentle on the rumen wall.
- Contains less crude ash than standard molasses, making it significantly more digestible, particularly for young animals.



VITAL AND HEALTHY ANIMALS

STABISAN: Prevention and Control of Calf Scours

- ▶ Vital and healthy calves
- ▶ Fast control and prevention of scours
- ▶ Rapid strengthening

Vital and healthy calves

STABISAN is excellently suited for the prevention as well as the rapid control of calf scours. Natural ingredients effectively stop calf diarrhea.

Weakened calves receive the necessary electrolytes, vitamins, and herbal extracts to quickly regain their strength and vigor.

Fast control and prevention of scours

- Natural apple pectin for high water-binding capacity.
- Lactic acid bacteria, live yeasts, and mucilaginous substances for rapid development and optimal protection of the intestinal villi, as well as a healthy gut flora.

- Yeast extracts for the complete removal of bacteria and toxins and to boost overall immune defenses: a natural treatment for nutritional scours.

Rapid strengthening after scours

- High electrolyte content (glucose, sodium, potassium) for rapid rehydration of the body and quickly available energy: a fast increase in vitality for sick and weakened calves.
- Vitamins A, D, E, C, and beta-carotene for the rapid regeneration of damaged mucous membranes and a general increase in resilience—ensuring a fast recovery and steady continued growth of your calves.



Application

For scours prevention:

Add 1 level measuring spoon (15 g) per meal, for a duration of 1–7 days.

For acute scours or prevention in newly purchased calves:

Add 2 level measuring spoons (30 g) per meal, for a duration of 1–3 days.

If scours persist, we recommend consulting a veterinarian!

Ingredients

Apple pectin*, dextrose*, linseed cake*, locust bean meal*, sodium bicarbonate, sodium chloride, yeast (autolyzed)*, potassium chloride. *=Source of carbohydrates

Packaging Units

1 kg bucket; 6 x 1 kg / box



FERTILIZERS

Fertilizers form the foundation of every form of successful agriculture. They ensure a balanced nutrient supply and create the basis upon which stable yields, vital plants, and long-term productive soils can emerge. Agriculture can be understood like a pyramid: at the very bottom is the nutrient balance in the soil—without this foundation, no system can function sustainably. This is exactly where our fertilizers come in.

For decades, Hechenbichler has been delivering high-quality fertilizers that work reliably and deliver on their promises in the field. Our products are formulated to be applied efficiently, provide uniform action, and supply crops with the macro- and micronutrients they need for robust growth and healthy development. A balanced nutrient supply ensures that plants can reach their full natural potential.

The quality of our fertilizers stems not only from carefully selected raw materials but also from years of experience collaborating with farms across a wide range of crops and regions. This consistency in performance and supply reliability makes our fertilizers a dependable component in production planning—season after season, predictable, and of consistently high quality.

In this way, we support farms in securing the most vital foundation of their work: a balanced, well-nourished soil that enables plant vigor and maintains long-term fertility. This creates the bedrock upon which agricultural success can grow—with stable effects, proven quality, and a secure nutrient supply for every season.



THE LIQUID PHOSPHORUS

POWERPHOS: Fast Liquid Phosphorus for Grassland & Arable Farming

- ▶ Polyphosphate with nitrogen
- ▶ Fast and reliable action via foliar application
- ▶ For early growth stages, flowering, and fruit set

Why do plants need foliar phosphorus?

Phosphorus is highly immobile in the soil. Phosphorus molecules move only 2–3 mm per year! Adverse pH values, soil compaction, drought, and poor root development lead to undersupply and deficiency symptoms in the plants. POWERPHOS enables fast and targeted compensation of this undersupply through foliar fertilization.

POWERPHOS – the ideal phosphorus

- Phosphorus fertilization is possible at any time, regardless of soil conditions, pH value, and weather.
- Optimal for all situations with increased phosphorus demand.
- Contains polyphosphate, the most effective form of phosphorus.
- Contains an additional 10% nitrogen.

POWERPHOS in grassland

High-quality forage for animal health and high milk yields requires supplemental phosphorus.

- Phosphorus content in cattle slurry is often too low.

Mixing POWERPHOS into the slurry before application is the simplest and fastest way to supplement phosphorus in grassland.

- No additional application costs.

POWERPHOS in arable farming

In the early growth stages, the plant needs a lot of phosphorus quickly:

- High metabolic rate.
- The root system is still small.

Before flowering to secure yields:

- For better grain development.
- For a better tuber set (e.g., potatoes).



Application

Grassland: 20–30 l/ha for the first growth/cut, 10–15 l/ha for each subsequent growth/cut. When applying with slurry, mix POWERPHOS undiluted into the slurry tank during loading via a bypass or suction intake.

Arable land: 5 l/ha per application.

Crop-specific application recommendations can be found on the product label and our website.

Nutrient Content

NP 10-34

- 10 % Total Nitrogen (N)
- 10 % Ammonium nitrogen
- 34 % Total Phosphorus Pentoxide (P₂O₅)
- 34 % water-soluble P₂O₅
- 34 % neutral ammonium citrate-soluble P₂O₅

Technical Specifications

pH Value: 6–7

Specific Gravity: 1.38 kg/l

Packaging Units

10 l canister; 75 x 10 l / Pallet
200 l drum; 2 x 200 l / Pallet
1,000 l IBC (Pallet tank)



WARNING

Hazard Statements

H302 Harmful if swallowed.

H319 Causes serious eye irritation.



Application

5 l/ha per application.

Please refer to the product label or our website for crop-specific application timings.

Nutrient Content

K (S) 25 (42) / 20.75 (16.8)

25 % Potassium Oxide (K_2O) (= 20.75% K), water-soluble

42 % Sulfur Trioxide (SO_3) (= 16.8% S), water-soluble

Technical Specifications

pH Value: 7.5–8.5

Specific Gravity: 1.47 kg/l

Packaging Units

10 l canister; 75 x 10 l / Pallet
1,000 l IBC (Pallet tank)



POTASSIUM AND SULFUR – LIQUID

KALIMAX: Potassium Fertilizer with Thio-Sulfur

- ▶ Efficient Potassium & Sulfur Fertilization
- ▶ Regulates Water Balance, Strengthens Tissue
- ▶ Improves Nutrient Availability

Why do plants need potassium and sulfur?

Potassium plays a crucial role in plant metabolism, particularly in carbohydrate metabolism, protein synthesis, and the regulation of the water balance. Potassium strengthens leaf tissue, increases lodging resistance in cereals, improves storability, and makes the plant more resilient to environmental stress.

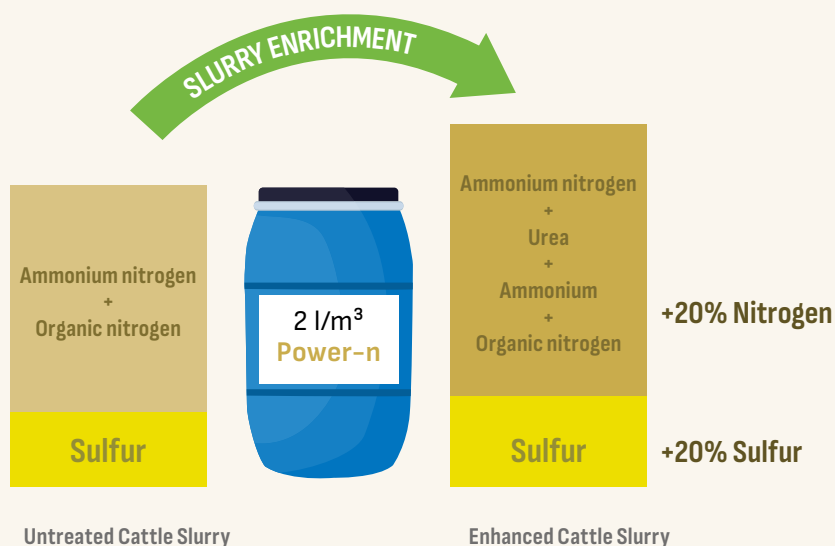
During growth stages with high potassium demand, soil-based supply is often insufficient. This is where KALIMAX is required, applied via foliar spray or through fertigation systems.

KALIMAX also contains a high proportion of sulfur. This nutrient is an essential element for protein formation and significantly increases nitrogen efficiency. The sulfur is present in the form of thiosulfate. In this form, a portion of the sulfur is immediately available as sulfate, while the overall duration of action extends over several weeks.

KALIMAX – The efficient potassium and sulfur fertilizer

- High content of potassium and sulfur, immediately bioavailable to the plant
- Chloride-free, making it ideal for potassium supply in chloride-sensitive crops
- Increases the availability of micronutrients like iron and manganese
- 100 % water-soluble
- Suitable for both fertigation and foliar fertilization





Increase in nutrient content in cattle slurry by adding 2 l of POWER-N per m³ of slurry. *Cattle slurry: undiluted, average values based on official tables.

THE LIQUID NITROGEN

POWER-N: Nitrogen-Sulfur Fertilizer for Slurry Enrichment

- ▶ Optimal Nitrogen-Sulfur Ratio
- ▶ 3 Forms of Nitrogen
- ▶ Long-term Effect

How to Give Cattle Slurry More Fertilizing Power

Cattle slurry often contains insufficient nutrients. Nitrogen is typically only present in organic form and as ammonium. Especially in the spring when soil temperatures are low, this nitrogen is poorly available—or completely unavailable—to the plants. Consequently, grassland growth is delayed and the feed value is reduced. Maize also falls behind during its early growth stages.

Enriching Cattle Slurry

Supplementing cattle slurry with the liquid fertilizer POWER-N significantly enhances its value. Adding just 2 l of POWER-N per m³ of slurry adds an extra +20 % nitrogen and +20 % sulfur.

The nitrogen is provided in the forms of ammonium, urea, and fast-acting nitrate. This ensures that nitrogen and sulfur are consistently available to the plants throughout the entire growth period. Depending on the intensity of management, application rate, slurry dilution, and the type of grassland, 1–3 l of POWER-N per m³ of slurry is recommended.

Benefits

- Significantly higher nitrogen and sulfur content in the slurry.
- Nutrients are uniformly available throughout the entire growth cycle.
- Improved protein content and energy density in the forage, leading to higher milk yields.
- Robust early development in maize.



Application

Grassland: 20–25 l/ha for each growth/cut. During slurry loading, mix POWER-N undiluted into the tank using a bypass or suction intake.

Nutrient Content

N (S) 27 (7.5) / 27 (3)
 27 % Total Nitrogen (N)
 6.4 % Nitrate nitrogen
 7.8 % Ammonium nitrogen
 12.8 % Urea nitrogen
 7.5 % Sulfur Trioxide (SO₂) water-soluble (=3 % S)

Technical Specifications

pH Value: 7
Specific Gravity: 1.3 kg/l

Packaging Units

200 l drum; 2 x 200 l / Pallet
 1,000 l IBC (Pallet tank)



WARNING
Hazard Statements
 H319 Causes serious eye irritation.



Application

Arable land: 3–5 l/ha per application.
Straw decomposition: 20–30 l/ha applied to the straw after harvest; use high-coverage wetting nozzles, then incorporate shallowly into the soil.
 Application timings and crop-specific application rates can be found on the product label and our website.

Nutrient Content

NPK (S) 12-0-0 (65) / 12-0-0 (26)
 12 % Total Nitrogen (N)
 12 % Ammonium nitrogen
 65 % Sulfur Trioxide (SO₃) (= 26 % S), water-soluble

Technical Specifications

pH Value: 8–9
Specific Gravity: 1.33 kg/l

Packaging Units

10 l canister; 75 x 10 l / Pallet
 200 l drum; 2 x 200 l / Pallet
 1,000 l IBC (Pallet tank)



THIO-SULFUR WITH NITROGEN

SULFO-N: Fast and Sustained Sulfur Fertilization

- ▶ Active Sulfur and Ammonium
- ▶ Enhances the Effectiveness of UAN (AHL)
- ▶ Supports Straw Decomposition

Why do plants need nitrogen and sulfur?

Nitrogen, as one of the three primary macronutrients, plays a crucial role in protein metabolism and photosynthesis. The plant can take up nitrogen in the form of nitrate and ammonium. While nitrate can be utilized very well by the plant, it is highly susceptible to leaching due to its high mobility and solubility. Nitrogen deficiency can also occur during growth phases with increased nutrient demand.



Why SULFO-N?

SULFO-N provides quickly available ammonium, helping to compensate for nitrogen deficiency. Additionally, SULFO-N contains a high proportion of sulfur. This nutrient is an essential element for protein synthesis and significantly increases nitrogen efficiency. The sulfur is present as thiosulfate. In this form, a portion of the sulfur is immediately available as sulfate, while the duration of action extends over several weeks.

SULFO-N is the ideal product for combined nitrogen-sulfur fertilization

- High nitrogen and sulfur content, immediately bioavailable to the plant
- Improves the efficiency of nitrogen fertilization
- Increases the availability of micronutrients such as iron and manganese



Application

Apply using a standard fertilizer spreader. If possible, incorporate shallowly into the soil. Crop-specific application recommendations can be found on the product label and our website.

Arable land: 25–50 kg/ha before planting/sowing. **Grassland:** 25–50 kg/ha at the start of the growing season.

SULFOGRANULAT and SULFOLINSEN comply with Regulation (EU) 2018/848 as amended and are therefore **approved for organic farming**.

Nutrient Content

(S) [225] / [90]

225 % Total Sulfur Trioxide (SO₃) (= 90 % S)

Technical Specifications

SULFOGRANULAT (Granules): Size:

2–6 mm; **Bulk density:** 1.22 kg/l

SULFOLINSEN (Pastilles): Size: 2–5 mm;

Bulk density: 1.15 kg/l

Packaging Units

25 kg bag; 40 x 25 kg / Pallet

SULFOGRANULAT: 1,000 kg Big Bag

SULFOLINSEN: 1,100 kg Big Bag or 2 x 600 kg



WARNING
Hazard Statements
H315 Causes skin irritation.

ELEMENTAL SULFUR – DUST-FREE

SULFOGRANULAT / SULFOLINSEN: Long-Lasting Sulfur Fertilizer

- ▶ Improves Nitrogen Utilization
- ▶ Promotes Phosphorus Availability
- ▶ Strengthens Soil Health

The Importance of Sulfur for Arable Land and Grassland

Sulfur is indispensable for healthy plants and high yields. Nitrogen requires sulfur; optimal nitrogen utilization is only possible when sufficient sulfur is available. The ideal ratio between nitrogen and sulfur should be approximately 10:1. Furthermore, the combination of sulfur deficiency and high nitrogen application leads to an undesirable accumulation of nitrate within the plant.

Sulfur is essential for the formation of proteins and gluten and enhances the flavor of vegetables. In forage, sulfur increases the nutritional value—leading to more milk from grass and clover.

Due to successful air pollution control (reduced atmospheric deposition), sulfur deficiency has become one of the most common nutrient gaps in Central Europe. Consequently, sulfur fertilization has become an urgent necessity.

Cost-effective Basal Fertilization with Elemental Sulfur

Elemental sulfur becomes available to plants through the activity of soil bacteria (oxidation). This effect is long-lasting, and because the sulfur is not initially in sulfate form, there are no losses due to leaching.

Benefits of SULFOGRANULAT and SULFOLINSEN

- Suitable for all arable crops, specialty crops, and grassland.
- Provides a long-lasting sulfur supply throughout the growing season.
- pH Regulation Used to lower the value for all crops that require acidic soil conditions.
- Strengthens soil health against soil-borne fungal diseases (e.g., scab, Rhizoctonia).
- Under sufficient soil moisture conditions, the sulfur odor can help deter wild boars and mice.

MEERKALK



Application

Grassland, Arable land: 500 kg / hectare
Horticulture, Lawns: 8 – 12 kg / 100

MEERKALK complies with Regulation (EU) 2018/848 and is therefore **approved for organic farming**.

Nutrient Content

51 % Total Calcium Oxide (CaO)
Neutralizing value: 51 (CaO equivalent)
Reactivity: 99 % (Hydrochloric acid test)

Technical Specifications

Bulk density: 1.27 kg/l
Granule size: 3–6 mm

Packaging Units

25 kg bag (Full load 23.1 t)
600 kg Big Bag (Full load 24 t)



GRANULATED – DUST-FREE

MEERKALK: Fast-Acting Calcium Fertilizer

- ▶ Meets the calcium requirements of plants thanks to high reactivity
- ▶ Raises soil and counteracts acidification
- ▶ Retains moisture in the root zone

Why grassland also requires a lime fertilizer

Intensively managed grassland becomes increasingly acidic due to calcium removal (harvesting, leaching) and fertilization (slurry, mineral fertilizers). Soil acidification degrades soil structure, reduces nutrient availability, inhibits soil microorganisms, and lowers yields.

Lime improves soil structure, increases porosity and water storage capacity, and is essential for nutrient availability and biological soil activity. Regular liming is therefore necessary to maintain productive stands of high-quality forage grasses.

Why is MEERKALK so effective?

MEERKALK consists of calcium carbonate derived from younger, less compacted parent rock. This is impressively demonstrated under a Scanning Electron Microscope (SEM), where the original organic structures are still clearly visible (see illustration).

The high porosity and fine grind lead to exceptionally high reactivity, ensuring that the calcium is easily absorbed by the plant and acts rapidly within the soil.

Benefits of MEERKALK

- Meets the calcium requirements of the plants.
- Rapidly raises the value in the germination horizon.
- Retains moisture in the root zone.
- Supports high milk yields and healthy cows.





GRANULATED – DUST-FREE

MEERKALK S+: Dual Action in One Pass

- ▶ Liming & sulfur fertilization in a single operation
- ▶ Fast-acting calcium
- ▶ Sulfur in both sulfate and elemental forms

Why fertilize grassland with lime and sulfur?

Intensively managed grassland becomes increasingly acidic due to nutrient removal (harvesting, leaching) and fertilization (slurry, mineral fertilizers).

Soil acidification degrades soil structure and nutrient availability, ultimately reducing yields. To prevent this and maintain a productive stand of high-quality forage grasses, lime application is essential.

Sulfur is vital for healthy plants and high yields; optimal nitrogen utilization (aiming for an N:S ratio of approx. 10:1) requires sufficient sulfur. Due to successful air pollution control (reduced atmospheric deposition), sulfur deficiency is now widespread in Central Europe, making sulfur fertilization urgently necessary. Furthermore, it increases the feed value—resulting in more milk from grass and clover.

Why is MEERKALK S+ so effective?

MEERKALK S+ contains calcium carbonate derived from younger, less compacted parent rock. Its high porosity and fine grind result in exceptionally high reactivity, allowing the calcium to be easily absorbed by the plant and act quickly within the soil.

Additionally, MEERKALK S+ contains two forms of sulfur: Sulfate sulfur is immediately available at the start of the growing season. Elemental sulfur is released slowly by soil bacteria, providing a long-lasting effect and preventing leaching losses.

Benefits of MEERKALK S+

- Liming and sulfur fertilization in one step.
- Covers calcium and sulfur requirements while rapidly raising the pH value in the germination horizon.
- Optimal nitrogen efficiency thanks to fast-acting sulfate sulfur and sustained-release elemental sulfur.



Application

Grassland: 300 kg/ha

Arable land: 200 kg/ha in dry locations, 300 kg/ha in high-rainfall locations.

MEERKALK S+ complies with Regulation (EU) 2018/848 as amended and is therefore **approved for organic farming.**

Nutrient Content

[Ca-S] (44.8-25)

44.8 % Total Calcium Oxide (CaO)

Neutralizing value: 37 (CaO equivalent)

25 % Total Sulfur Trioxide (SO₃) = 10 % Sulfur (S), consisting of 7 % elemental sulfur and 3 % sulfate sulfur.

Technical Specifications

Granule size: 2–6.3 mm

Bulk density: 1.27 kg/l

Packaging Units

600 kg Big Bag (Full load/Truckload 24 t)



HECHENBICHLER
A BOOST FOR SOIL · PLANTS · ANIMALS

Hechenbichler GmbH
Cusanusweg 7-9
6020 Innsbruck | Austria
T +43 512 291810-0
info@hechenbichler.com
www.hechenbichler.com